



# CEDA ANNUAL REVIEW

---

May 1, 2020 – April 30, 2021

CEDA  
1626 6th Avenue N.  
Lewiston, ID 83501  
(208)746-0015  
[www.clearwater-eda.org](http://www.clearwater-eda.org)



CEDA's Mission:  
to assist businesses and communities by acting as a conduit to needed resources.



## From CEDA Executive Director

What a year we have lived through!

At this time last year, CEDA staff had just begun working from home in response to the COVID-19 pandemic. On June 1<sup>st</sup>, the staff will be returning to the office and operating out of our CEDA home at 1626 6<sup>th</sup> Avenue N, Lewiston.

I am proud to say that CEDA did not experience much down time during our transition to home offices last year and we are operating at full capacity. WE, like all of you, are sick of Zoom meetings and are welcoming opportunities for face-to-face collaboration. CEDA has adjusted its COVID-19 protocols all along. Our goal is to provide quality services while doing our best to protect our members, customers, partners, staff, and the CEDA organization.

CEDA provides this document to share with our members and partners our activities since last year.

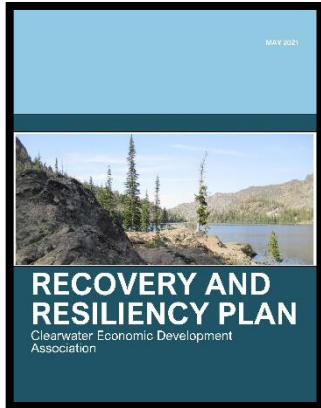
Here are just a few important highlights:

- 1. CEDA Membership:** CEDA remains strong with 65 members representing county and city government, taxing districts, private industry, non-profits, and education. Our NEWEST member is Idaho Manufacturing Alliance. IMA is focused on “knowledge sharing, collaboration and advocacy to influence a manufacturing environment that creates benefits for the industry and the community.” IMA is a great compliment to our regional manufacturing association and member, Northwest Intermountain Manufacturers Association. For more on IMA, see [www.idmfg.org](http://www.idmfg.org)
- 2. CEDA Website:** CEDA is launching our new website this month! Please check us out at [www.clearwater-eda.org](http://www.clearwater-eda.org).
- 3. CARES Act Awards:** In July 2020, CEDA received \$400,000 in supplemental funds from the U.S. Department of Commerce Economic Development Association for economic disaster relief planning and implementation in response to the pandemic. CEDA received \$910,000 in revolving loan funds and another \$91,000 in technical assistance funds to support the needs of businesses impacted by the pandemic. These resources have been a blessing and critical to CEDA’s ability to respond to the business and community needs. The results of these resources are shared more specifically in this report.
- 4. Project Grant Awards:** In addition to the CARES Act resources, CEDA secured another \$4.8 million in project planning and implementation resources for north-central Idaho.  

---

*From May 1, 2020 to April 30, 2021, CEDA secured \$64 in project resources for every \$1 of membership.*

---
- 5. Imagine Idaho:** CEDA has a seat at a new table! Imagine Idaho is a “campaign to increase awareness around the importance of broadband throughout Idaho.” *Imagine Idaho’s* goal is to increase broadband access allowing all Idahoan’s to live, learn, and work anywhere in Idaho. CEDA Executive Director Christine Frei serves as a board member for the 501(c)(4) non-profit, Imagine Idaho Action. For more information, see: [www.imagineidaho.org](http://www.imagineidaho.org).



# STRATEGIC PLANNING

CEDA works with the Economic Development Districts of Idaho on Disaster Planning

Soon after receiving CARES Act Supplemental funding, the Economic Development Districts (EDDs) pooled funds and worked with Tip Strategies of Austin, Texas to build a resilience plan framework focused on economic difficulties resulting from biological natural hazards such as the coronavirus pandemic and other natural or manmade disasters. CEDA is using the training and the framework in the development of an economic recovery and resiliency plan that will be included in their Comprehensive Economic Development Strategy (CEDs) Disaster Resiliency Chapter. For more information, contact Deb Smith, CEDA Regional Economic Planner at [dsmith@clearwater-eda.org](mailto:dsmith@clearwater-eda.org).

This year, CEDA put a great deal of its disaster planning efforts into supporting business development and in broadband expansion. More of this is covered in different sections within the report.

# WORKFORCE DEVELOPMENT

## Clearwater Basin Youth Conservation Corps Program (CBYCC) Continues

In August 2020, CEDA wrapped up its first Clearwater Youth Conservation Corp season. Six crews operating out of Potlatch, Orofino, Kooskia, Grangeville, and Pierce completed their summer season clocking in 8,468 hours of service. Production work from 28 youth and six adult crew leaders



included projects in forestry and silviculture, wildlife and fisheries, water quality, invasive species, wildfire protection, cultural resources, and natural resource management. One youth that had turned 18 by the end of the season continued with a wilderness trail crew working until mid-November 2020.



When asked for comments about their experience, one crew member said, “My goal is to pursue a natural-resource career. This program helped me make connections and learn more about natural resource jobs.” Another crew member stated, “This was a great experience. I learned a lot. Thank you for an awesome summer.”



2020 partners included the Nez Perce Clearwater National Forest, the Army Corp of Engineers, Latah County Soil & Water, Idaho Firewise, the National Park Service, Clearwater-Potlatch Timber Protective Association, Latah County, Idaho Forest Group, the Clearwater RC&D, the Clearwater Basin Collaborative, the Idaho Department of Labor, Idaho Division of Vocational Rehabilitation, the University of Idaho, Idaho Fish and Game, and others.

The CBYCC is a partnership started in 2013 through the efforts of Clearwater RC&D, Clearwater Basin Collaborative, USDA Forest Service, Idaho Department of Labor, U.S. Army Corps of Engineers, USDI Bureau of Land Management and Park Service, Idaho Firewise, and other local counties, communities, and organizations.

The mission of the Clearwater Basin Youth Conservation Corps (CBYCC) is to expose youth to natural resource career opportunities and to facilitate the development of practical problem-solving skills while participants work alongside program and technical specialists on projects that restore aquatic and terrestrial habitats and promote healthy rural communities.

Recruitment is in process for the 2021 CBYCC season. In addition to the CBYCC crews, CEDA will be hiring two young adults for a Wilderness Trail Crew and a crew lead for the Kelly Forks Wilderness Trail Crew.



## *Dream It. Do It...Here 2021 Youth Conference Held*

CEDA and the University of Idaho hosted the fifth annual conference on March 18. The virtual conference was hosted by UI from campus. Four-hundred seventy-five youth registered for the event.



A failure of the virtual platform caused a two-hour delay in the programming. UI Information Technology went into action and helped to get the conference back on course. The event hosted the greatest variety of industry presenters with over 50 presenters coming from 27 business and organizations. The purpose of the event is to attract high school students to local careers and educational pathways to attain the jobs we have in north-central Idaho and southeast Washington.

### **Conference Financial Sponsors**

Lewis-Clark State College  
 University of Idaho  
 Nez Perce Tribe Education Fund  
 Clearwater River Casino  
 Idaho Forest Group  
 NIMA

P#1FCU  
 SEWEDA  
 CCI/Speer  
 Jetco Machine  
 Nightforce Optics  
 Pacific Cabinets

Gritman Medical Center  
 Tri State Memorial Hospital  
 J-U-B Engineers, Inc.  
 Pullman Regional Hospital  
 Hillco Technologies

### Conference Presenters

Advantage Advertising	Keller Engineering	Schweitzer Engineering
City of Lewiston	Lewiston MPO	Laboratories
City of Moscow	Mike's Mechanical	St. Joseph Regional Medical
Clearwater Canyon Cellars	Nez Perce Tribal Technology	Center
Clearwater River Casino	Center	Stifel Investment Services
Comstrat Corporation	Palouse Pathways	Tri-State Memorial Hospital
Hillco Technologies	Potlatch #1 Financial Credit	University of Idaho Info
Idaho Department of	Union	Technology
Corrections	PotlatchDeltic	US Forest Service
Idaho Fish and Game	Presnell Gage	Wells Fargo
Idaho Forest Group	Russell Specialty Construction	Zions Bank
Joe Hall Ford		

### Conference Planners & Volunteers

University of Idaho	Nez Perce Tribe
SEWEDA	Marvin Dugger
Lewis-Clark State College	Valley Vision
Clearwater Economic Development	

### Dream It Do It Program Financial Sponsors

CEDA	
Lewis-Clark State College	SEWEDA
NIMA	Valley Vision
Port of Clarkston	

The *Dream It. Do It...Here* 2022 conference is scheduled for May 17 on the Lewis-Clark State College campus. CEDA has already started fund raising and has applied for Nez Perce Tribe Education Funds.

## Local Career Videos in Process

CEDA and LC STATE, along with the Northwest Intermountain *Dream It. Do It.* partners, are developing a video library of in-demand occupations. In January, CEDA contracted with a local advertising company to develop 12-15 videos featuring the most in-demand occupations in some of the businesses throughout north-central Idaho. Great care is being taken to get cross regional representation and diversity of industries and jobs. Currently, Hillco Technologies, Nezperce; Presnell Gage Accounting, Moscow, Lewiston, Orofino, and Grangeville; Idaho Forest Group, Lewiston and Grangeville; and J-U-B Engineers, Moscow and the Camas Prairie are participating. The videos are targeted toward junior high school and high school students and will be available on the *Dream It. Do It.* page of the CEDA website.

LC State created a companion video that encourages junior high school students to consider their choices as they go into high school. The video can be seen at:

<https://vimeo.com/532364266/545ae9197a>

This fall, CEDA hopes to coordinate a ½ day career awareness workshop at 15 area schools and work with partners to host a STEM competition. This portion of the project was put on hold because of the pandemic. The Idaho State Workforce Development Council and EDA is funding these activities.

## STEM Application Videos in Development

CEDA partnered with LC State and Schweitzer Engineering Laboratories to develop a video library for demonstrating the practical application of science, technology, engineering, and math concepts.

The video library is for educators and is provided free-of-charge. The videos supplement STEM education for K-12. Links to the videos are being made available on the new *Dream It. Do It.* page of the CEDA website. Here is a sampling of the videos made thus far.

Education Level:	Discipline:	Concept:	Link:
K-16	General Science	Part 1-5 Series Listed below	<a href="https://youtube.com/playlist?list=PLdO-TycNI3Vg2yIPgNR3Zn4VJmltav_6X">https://youtube.com/playlist?list=PLdO-TycNI3Vg2yIPgNR3Zn4VJmltav_6X</a>
K-16	General Science	Part I: Energy transfer; types of energy	<a href="https://www.youtube.com/watch?v=-ehkRvcAEsA&amp;feature=youtu.be">https://www.youtube.com/watch?v=-ehkRvcAEsA&amp;feature=youtu.be</a>
K-16	General Science	Part 2: High and low energy; kinetic and potential energy	<a href="#">Energy Part 2: High and Low Energy</a>
K-16	General Science	Part 3: Stable and unstable, spontaneous change, transfers of energy, coupled reactions in biology	<a href="https://youtu.be/eJvil4jAxCQ">https://youtu.be/eJvil4jAxCQ</a>
K-16	General Science	Part 4: Spontaneous changes, irreversible processes, disorder, times arrow	<a href="#">Energy part 4: Entropy</a>
K-16	General Science	Part 5: Physics and chemistry, units	<a href="https://youtu.be/0M36EL2Mo1E">https://youtu.be/0M36EL2Mo1E</a>
11-12	Math	Modeling certain properties of magnetic materials	<a href="https://www.youtube.com/watch?v=NGIO-cBjroE">https://www.youtube.com/watch?v=NGIO-cBjroE</a>
11-12	Math	When are we ever going to use...logarithms	<a href="https://www.youtube.com/watch?v=gPOYV8WtUi4">https://www.youtube.com/watch?v=gPOYV8WtUi4</a>
11-12	Math	When are we ever going to use...radians?	<a href="https://www.youtube.com/watch?v=lhM2DA0d6x4">https://www.youtube.com/watch?v=lhM2DA0d6x4</a>

SEL and LC State developed the videos. CEDA managed a survey to get educator input and is responsible for housing the video library.

## North Central Idaho Represented by CEDA on Idaho STEM Action Foundation

CEDA Executive Director Christine Frei accepted a board position on the Idaho STEM Action Foundation. Christine is the only representative from the top 10 Idaho counties. Christine has also worked with regional partners on planning for a regional STEM Action collaborative.

# BUSINESS & INDUSTRY DEVELOPMENT

## Business Finance and Technical Assistance

### Capital Expansion

CEDA’s capital available to lend was increased by \$400,000 via the USDA Intermediary Relending Program in response to increasing demand for small business financing and by \$910,000 via EDA’s CARES Act award to provide CEDA with resources for response to the impacts of the Covid-19 pandemic. The \$1.3 million addition brings the total loan program capital to \$5 million. As a result of the increased demand, matched with increased resources, CEDA’s portfolio has grown to over \$3.5 million and is expected to exceed \$4 million by the September 30 fiscal year end. The goal at CEDA is to maintain 80% to 85% of its capital in the form of loans receivable which currently equates to \$4 million to \$4.25 million.

### Activity highlights

Funds disbursed over the 12-month period totaled over \$1.2 million to fund eleven unique projects. Total loans approved totaled over \$1.7 million, (the highest ever). Four of these approvals are pending closing at the report date. Two decided not to proceed after being approved. Historically, the amount of new loans issued per year averaged 20% of the capital base. In more recent years that changed to an unsustainable 33%, prompting the capital expansion.

Funds repaid to CEDA by existing Borrowers during the 12-month period totaled \$643,311. Principal repaid to CEDA is returned to the capital pool and reloaned. Write-off of bad debt at CEDA was zero for the second consecutive 12-month period. Bad debt is not accrued but is taken when it occurs. Overall, 5% of the amount loaned is written off which approximates the industry average. Nine CEDA Borrowers retired (paid-of) their loans. Four via refinancing, four via accelerated monthly payments, and one under workout arrangements.

### Projects

Company	City	Type of Project
<b>Big Iron Motel</b>	Riggins	Wrap up renovations started in prior period
<b>Shrader Truck &amp; Auto</b>	Lewiston	Purchase business from retiring owner
<b>208 SEED</b>	Winchester	Construct & start seed cleaning facility
<b>Eversource Mark I</b>	Craigmont	Start-up polymer production
<b>River Cabinets</b>	Moscow	Purchase business from retiring owner
<b>Reese Snyder Logging</b>	Orofino	Transition to full-time self-employment
<b>Paradise Café</b>	Moscow	Debt restructure to provide relief from impacts of Covid-19
<b>AirBridge Broadband</b>	Grangeville	Enhance redundancy of internet service expansion
<b>Heavens Gate Mercantile (FKA Troy Grocery)</b>	Troy	Purchase real estate to facilitate reopening recently shuttered business under new ownership.

<b>DZ Designs</b>	Lewiston	Aid with retention of business in downtown location under new ownership.
<b>Little River Tackle</b>	Riggins	Restock inventory & equipment upgrades to restart after shutting down for Covid-19 pandemic.
<b>Iron Jaw Excavation</b>	Weippe	Transition to full-time self-employment
<b>Stites Hardware &amp; Home Center</b>	Stites	Inventory financing to aid with expansion under new ownership, following purchase from retiring owner.

## Partnering with the Economic Development Districts

Efforts are currently underway in partnership with Panhandle Area Council (Region I), Region IV Development, Southeast Idaho Council of Governments (Region V), and East Central Idaho Planning (Region VI) to secure an additional \$20 million in aggregate of loan capital from American Recovery funds.

## CEDA Properties for Economic Development

CEDA's Asset Management program is a resource that makes investments in properties meant to improve life in rural communities of north-central Idaho by helping member communities meet the needs of their citizens via positively impacting provision of basic services and/or employment opportunities for local citizens.

- **Craig Mountain Business Park, Craigmont:** Eversource Mark I is under a lease purchase agreement for one and a half lots at the park. Eversource produces an asphalt binder.

Camas Post Yard purchased a second lot this past year. By the end of this summer, CEDA hopes to have the park properties completely sold.

- **Alturas Technology Park, Moscow:** CEDA continues to lease to Comtech AHA, Moscow. The tenant is a national, publicly traded corporation with many locations around the country.

## Other Business Development Activities

- **Northwest Intermountain Manufacturers Association**

CEDA has provided low level support to NIMA this past year. In June 2020, CEDA was awarded funding through the USDA

Rural Business Development Grant Program to coordinate a regional Additive Manufacturing workshop to be held this fall. It will be the second event to be held in the region. This workshop will focus on incorporating 3-D printing into the manufacturing process.



- **Lewis-Clark Valley American Viticultural Area (LCV AVA)**

CEDA continues to provide low level coordination services for the Lewis-Clark Valley Wine Alliance.



- **Cruise Boat Study**

The Ports of Clarkston and Lewiston just completed a cruise boat and large passenger vessel economic impact and needs assessment study that was funded by the Economic Development Administration, the ports, and other important



local partners. The study quantifies the recent economic impacts of the cruise boat industry, assesses growth trends, and helps identify current and future capacity needs and economic development opportunities. The report will guide stakeholders in the prioritization of investments in services, infrastructure, partnerships, and other strategies. CEDA helped to administer the grant.

- **Beautiful Downtown Lewiston HUB Innovation**

CEDA supports Beautiful Downtown Lewiston, Valley Vision, and the City of Lewiston to complete a feasibility study for an innovation center in Lewiston. The project is wrapping up now. The study was partially funded with USDA Rural Business Development Grant funding. CEDA wrote and administered the grant.

# COMMUNITY DEVELOPMENT

## REV Up North Idaho!

- **Moving the Connectivity Needle in North Idaho**

Using resources from the Broadband USA, USDA Rural Community Development Initiative (RCDI) Program, the Avista Foundation at Innovia, and local membership support, CEDA partnered with Panhandle Area Council and BroadbandUSA to host a six series, virtual training workshop on broadband. The first event was held in October 2020 and the last workshop was held in March 2021. Between workshops, virtual technical assistance sessions were hosted by CEDA and PAC to help solidify the training. Training topics include broadband basics, broadband as a necessary tool for economic development, planning and developing strategies for broadband, using survey data sets for planning, broadband access and adoption challenges and opportunities, broadband financing, and business plan development.

CEDA and PAC set up and hosted the workshop, marketed the program, and set up local speakers to supplement the workshops. There was a total of 445 participants in 12 workshops or TA sessions with an average of 37 participants per session.

- **Next Training – Housing**

CEDA and PAC have begun research for a training series on housing. They hope to host the workshops in person this fall.

## Projects in Development & Implementation

Important projects that are now being implemented in which CEDA is active include:

1. Donnelly Water Upgrade
2. Weippe Wastewater Upgrade
3. Rapid River Infrastructure Upgrade
4. Weippe Wastewater
5. Kendrick Wastewater
6. Kamiah Pool
7. New Meadows Water
8. LC State CTE Equipment Project

## 9. Lewiston High School CTE Equipment Project

**Broadband:** CEDA is very active in the development of the Moscow to Lewiston to Cottonwood to Grangeville Middle Mile Broadband project. The Port of Lewiston is in the last stages of securing funding for this project. CEDA continues to work with the District 2 Interoperability Governance Board to find funding for the Orofino to Nezperce to Grangeville Middle Mile Broadband project.

**Comprehensive Land Use Plans:** Although not much movement has happened this year because of the pandemic, CEDA is working with Lewis County, the City of Nezperce, and the City of Kooskia to complete their comprehensive land use plans. CEDA did work with the City of Stites to complete their plan in November 2020. CEDA hopes to start with the City of Riggins soon.

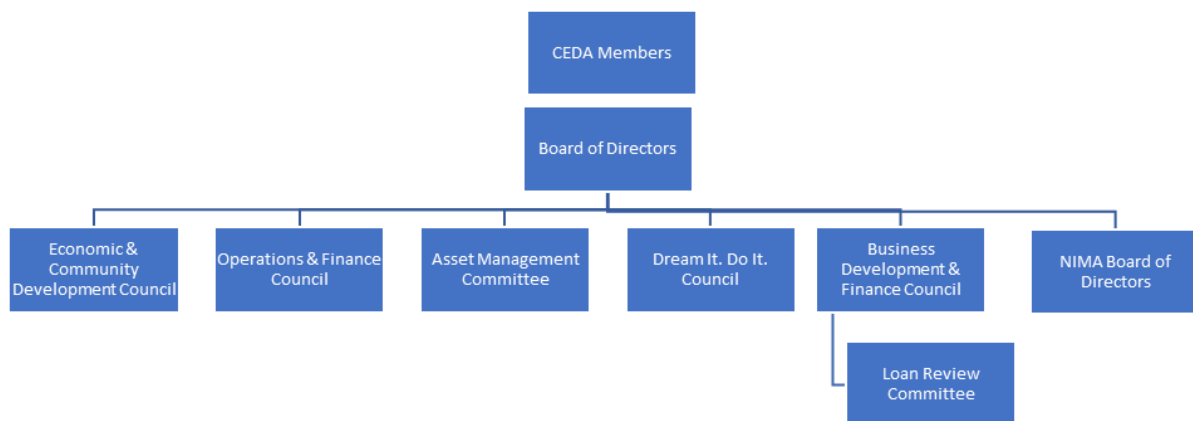
# GRANT AWARDS

CEDA remains active with grant writing to secure funds needed for regional development. Here is a table of projects that received funding with CEDA grant writing assistance. It includes business development, workforce development, and community development. Some of CEDA's help has been to communities in Region III. Grant programs include the Idaho Department of Commerce CDBG and Broadband programs, USDA Rural Business Development Grant and Rural Microentrepreneurial Assistance Program, RAC funds, EDA Planning and Technical Assistance programs, US Forest Service, foundation sources, and Idaho Travel Conventional Grant Program.

Project	Grant	Funding Agency	Grant Dollars
<b>Cruise Boat Economic Impact and Needs Assessment Study</b>	Technical Assistance	EDA	55,000
<b>Idaho County - Broadband</b>	Broadband CFAC Grant	IDC	850,000
<b>Elk City - Broadband</b>	Broadband CFAC Grant	IDC	320,000
<b>Lewis County - Broadband</b>	Broadband CFAC Grant	IDC	470,000
<b>Potlatch - Broadband</b>	Broadband CFAC Grant	IDC	621,000
<b>City of Clarkston Housing Rehab Program</b>	CDBG	WA	475,000
<b>City of Juliaetta Wastewater Treatment</b>	CDBG	IDC	500,000
<b>City of Nezperce Wastewater Treatment</b>	CDBG	IDC	500,000
<b>City of Kamiah Water System Improvement</b>	CDBG	IDC	280,000
<b>CBYCC Corp</b>	Cooperative	USACE	24,000
<b>CBYCC - 2020 Season</b>	Cooperative Agreement	CRC&D/FS	107,229
<b>CBYCC - 2020 Season</b>	Cooperative Agreement	CRC&D/NP S	5,975
<b>Idaho Comprehensive Economic Development Strategy</b>	EDA Planning Grant	EDA	65,870
<b>Dream It Do It - Conference &amp; Makerspace</b>	Nez Perce Tribe Local Education Fund	NPT	5,500

<b>Economic Development Implementation</b>	Planning Grant	EDA	75,000
<b>EDA Economic Disaster Resilience</b>	Planning Grant	EDA	400,000
<b>Statewide CEDS</b>	Planning Grant	EDA	65,870
<b>CBYCC RAC</b>	RAC	USDA FS	102,997
<b>Hells Canyon Recreation</b>	RAC	USDA FS	37,400
<b>Micro-Entrepreneurial Technical Assistance</b>	RMAP	USDA	89,179
<b>EDA RLF TA Assistance</b>	TA Grant		91,000
<b>Idaho County Broadband Study (Grangeville to New Meadows)</b>	Technical Assistance	EDA	120,000
<b>Kamiah Pool</b>	Construction	Foundation	10,000
<b>Additive Manufacturing Workshop #2</b>	RBDG	USDA	16,500
<b>BDL Innovation HUB</b>	RBDG	USDA	25,000
<b>2020/2021 NCITA Idaho Travel Council</b>	Idaho Travel and Convention Grant	IDOC	80,000
<b>Adams Co Mobile Medical Vehicle (CDBG-CV)</b>	CDBG	IDOC	350,000
<b>Wash. County Ambulance (CDBG-CV)</b>	CDBG	IDOC	300,000
<b>Total:</b>			<b>\$6,042,520</b>

# THE CEDA ORGANIZATION



CEDA works with members and a cross section of people who provide vision and planning for the work CEDA does. Here is a list of important contributors to our work!

## CEDA LEADERSHIP

Steven Greenfield

CEDA Chair  
Branch Manager/Assistant Vice-President, U.S. Bank

Kermit Mankiller

CEDA Vice-Chair  
Executive Officer, Nez Perce Tribal Enterprises

	BOARD MEMBER	TITLE	REPRESENTING
1	Beck, Don	Commissioner	Nez Perce County
2	Brown, Dave	Mayor	Potlatch, City of
3	Canaday, Dylan	Councilor	Grangeville, City of
4	Cook, Chris	Director	University of Idaho, Career Services
5	Davis, Melinda	Director	University of Idaho, STEM Action
6	Duman, Denis	Commissioner	Idaho County
7	Greenfield, Steve	Branch Manager	US Bank
8	Harmon, Seth "Pepper"	Mayor	Cottonwood, City of
9	Johnson, Greg	Commissioner	Lewis County
10	Kelly, Sandra	Councilor/Executive Director	City of Moscow/Partners for Economic Prosperity
11	LaFortune, Kathie	Commissioner	Latah County
12	Larson, Bruce	President	Northwest Intermountain Manufacturers Assn.
13	LeBoeuf, Helen	Retired, Commercial Loan Officer	Banner Bank
14	Mankiller, Kermit	Executive Director	Nez Perce Tribe
15	Miller, Cari	Councilor	Lewiston, City of
16	Nelson, Tyler	Councilor	Nezperce, City of
17	Ober, Jeff	Dean	Lewis-Clark State College, CTE Programs
18	Ryan, Mike	Commissioner	Clearwater County
19	Scalise, Victoria	President	North Central Idaho Travel Assn.
20	Smathers, Ryan	Mayor	Orofino, City of
21	Smith, Tate	Director	Lewis-Clark State College, First Year Experience

## MEMBERS

Avista Corp.  
Banner Bank  
Castellaw Kom Architects  
City of Cottonwood  
City of Craigmont  
City of Culdesac  
City of Deary

City of Elk River  
City of Genesee  
City of Grangeville  
City of Juliaetta  
City of Kamiah  
City of Kendrick  
City of Kooskia

City of Lewiston  
City of Moscow  
City of Nezperce  
City of Orofino  
City of Peck  
City of Pierce  
City of Potlatch

City of Riggins	Idaho Rural Water	Northwest Management, Inc.
City of Stites	Association	Port of Lewiston
City of Troy	Ida-Lew EDC	Potlatch #1 Financial Credit Union
City of Weippe	J-U-B Engineers, Inc.	Rademaker Design Studio
City of White Bird	Juliaetta/Kendrick RD	TD&H Engineering
City of Winchester	Keller Associates, Inc.	TenderCare Children's Center
Clearwater County	Keltic Engineering, Inc.	University of Idaho
Clearwater County EDC	Latah County	US Bank
Clearwater Power Company	Lewis -Clark State College	Valley Vision
Columbia Bank	Lewis County	Washington Trust Bank
First Step Internet	Lewis-Clark Valley Chamber	Wells Fargo
Great West Engineering, Inc.	Mountain Waterworks	White Bird RD
Idaho County	NCITA	Zions Bank
Idaho Department of Environmental Quality*	Nez Perce County	
Idaho Department of Labor*	Nez Perce Tribe	
	NIMA	

## Working Councils & Committees

- **Operations & Finance:** Jaynie Bentz, Denis Duman, Steve Greenfield, Robert Smith, Michell Rademaker, Cari Miller, Kermit Mankiller
- **Business Development & Finance:** Paul Burris, John Currin, Margaret Hair, Helen LeBoeuf, Barb Leachman, Rob Cassetto
- **Loan Review Committee:** Chase Carlin, Doug Purdy, Judy Schumacher, Dan Dorman, Joe Coghill, Emily Ashby, and Angela Brooks
- **Economic & Community Development:** Tate Smith, Kathryn Tacke, Mike Tatko, Salina Dugger, Charity Goodell, Shelly Cannon, Gavin Lewis, Ged Randall
- **Dream It. Do It. Workforce Development Council:** Debbie Baker, Adena Burnette, Erin Cassetto, John Cassleman, Scott Corbitt, Katie Deibel, Raymond Dixon, Kim Eimers, Jamie Garlinghouse, Melinda Davis, Heidi Hardin, Peggy Jenkins, Tony Kuphaldt, Gavin Lewis, Chad Miltenberger, Marie Price, Tim Rubio, Kay Seven, Kellye Sharp, Brian Shinn, Dawn Smith, Mark Smith, Linda Stricklin, BJ Swanson, Matt Vaartstra, Rod Van Alyne, Liz Weldy, Dovie Wiley
- **Northwest Intermountain Manufacturers Association:** Bruce Larson, Doug Miller, Lenny Hill, Glenn Anderson, Byron Cannon
- **Asset Management:** John Currin, Greg Johnson, Denis Duman

## CEDA Staff

	Position:	Years of Service:
Christine Frei	Executive Director	20.00
John Lane	Business Programs & Finance Director	25.00
Deb Smith	Economic Development Specialist	11.50
Angie Edwards-Kuskie	Community Development Specialist	5.50
Amber Dahmen	Business Development Assistant	4.50
Dodd Snodgrass	Development Manager	2.75

\*Dodd has an additional 6 years from prior service to CEDA.

### Staff Certifications:

- Idaho Community Development Block Grant – Christine Frei, Deb Smith, Angie Edwards, Dodd Snodgrass
- Professional Community & Economic Development (PCED) Certification – Deb Smith, Christine Frei
- Notary Public – John Lane

## Additional Professional Support

**Accounting Services:** Lohman Accounting, Andrea Braden CPA

**Auditor:** Hayden Ross, Nate Strong, CPA

**THANK YOU for Your Support!**