



# IN MOTION

Clearwater Economic Development Association | August 2021

## **2021 JOINT MEETING OF CEDA MEMBERS & BOARD OF DIRECTORS**

**Thursday, August 26, 2021**

**Meeting format changed to virtual only:**

**6:30 pm – Business Meeting & Program**

Zoom link will open at 6:30 pm: <https://us06web.zoom.us/j/87184625216>

Members are KEY to our ability to affect positive change in North Central Idaho. Your interest and your voice help to shape CEDA's strategies and the work we do to act on needs and opportunities! ALL representatives and board members are welcome! Plan to attend!

PLEASE RSVP by calling 208-746-0015 or emailing [adahmen@clearwater-eda.org](mailto:adahmen@clearwater-eda.org).

Thank you to our Meeting Sponsor: US Bank

## **KELLY'S SPLASH PAD DEDICATION**



On June 19 community members in Potlatch celebrated the grand opening of “Kelly’s Scenic 6 Splash Pad,” located in the City’s Scenic 6 Park.

This project is near and dear to Mayor David Brown, City Council, and the staff of CEDA. The namesake for the splash pad is Kelly Dahlquist, our late CEDA Community Development Director, who spearheaded his project and was a leader across North Central Idaho from 2010 to 2018 supporting our rural communities. Kelly’s legacy lives on in this project, her final completed during her amazing career. She inspired Idaho Rural Water Association’s Kelly Dahlquist Community Impact Award and was the first recipient, awarded posthumously in April 2020.



## **AMERICAN RESCUE PLAN ACT (ARPA) FUNDING UPDATES**

We have been following the allocation process for the American Rescue Plan Act (ARPA) funding for state and local governments. With every county and municipality in the region receiving an allocation there will be opportunities to support projects (for example water and wastewater), and leverage those dollars with other programs. We are working with the counties on funding middle-mile broadband initiatives, and there are additional eligible uses. These funds need to be committed by 2024 and spent by 2026. We are available to work with our CEDA members on making the best use of those funds

Questions on ARPA Funding? Contact Dodd Snodgrass at [dsnodgrass@clearwater-eda.org](mailto:dsnodgrass@clearwater-eda.org)

### **What's inside. . .**

- Economic Recovery and Resiliency Planning Underway
- Cruise Boat Economic Impact Study Wraps Up
- Clearwater Basin YCC Program Gets to Work!
- Community Development News!
- Meet Tim McDonald, Director of Ida-Lew Economic Development
- All things Broadband!

## **CEDA'S ECONOMIC RECOVERY AND RESILIENCY PLANNING UNDERWAY**

As 2020 began, COVID-19 emerged as a global pandemic, resulting in severe economic distress in communities across the country. To assist with response and recovery, the federal government approved the Coronavirus Response and Relief Supplemental Appropriation (CARES) act to mitigate financial impacts of the virus. Clearwater Economic Development Association (CEDA) and the four other federally designated economic development districts in Idaho (known collectively as the Economic Development Districts of Idaho or EDDI) pooled a portion of their CARES act funding from the Economic Development Administration to build a standardized, yet customizable, framework for economic response, recovery, and resiliency. Beginning in October 2020, the EDDIs engaged TIP Strategies (TIP) to assist their efforts to create an economic recovery and resiliency framework.

During the subsequent months, the initiative was guided by a steering committee comprised of representatives from each of the five EDDIs, EDA, the US Department of Agriculture Rural Development, the Idaho Department of Labor, the Idaho Office of Emergency Management, and the Idaho Workforce Development Council. Members of the steering committee also met with the National Association of Development Organizations (NADO) to discuss national best practices in recovery and comprehensive economic development strategy (CEDS) development, aligning those practices with the initiative's outcomes.

The project team met monthly to provide project updates, facilitate information sharing, share data relevant to economic recovery, and discuss national best practices in recovery and resiliency. These meetings created a strong foundation for the economic disaster recovery initiative deliverables:

- Economic recovery and resiliency tool
- Customizable response framework and plan template
- Communication and engagement strategies
- Train the trainer sessions focused on providing guidance for data sources and analysis

The economic disaster recovery and resiliency plan framework is a template which provides a roadmap for CEDA and partners to create district-specific economic recovery and resiliency plans. The template includes guidance for providing economic recovery and resiliency context, demographic, and economic data, assessing vulnerabilities and risks, developing priorities for action and investment, creating an implementation plan, setting metrics, and establishing a communication strategy. The template is designed to be flexible regarding local context and the intended purpose, whether the primary focus is on economic recovery from a specific event or establishing long-term resiliency.

Each District has seated a Regional Economic Recovery Team to represent the main economic interests for their respective regions in the planning, preparation, and response to COVID-19 economic injuries in north-central Idaho. The RER Team will guide a collaborative approach to support shared economic priorities across the region and develop short and long-term economic plan focused on pandemic and disaster economic recovery and resiliency.

CEDA's Regional Economic Recovery Team is comprised of regional economic stakeholders that include local economic development professionals, industry/trade associations, education, emergency managers, financial lenders, health care representatives, and others to collaboratively support the development and implementation of a post COVID-19 regional recovery and resiliency economic development plan. The CEDA Regional Economic Recovery Team began meeting monthly in July and are working to complete the North Central Idaho Economic Recovery and Resiliency Plan by the end of the year.

## **CRUISE BOAT ECONOMIC IMPACT AND NEEDS ASSESSMENT COMPLETE**

A recently completed economic impact and needs assessment of the cruise boat and passenger vessel industry in the Lewis-Clark Valley demonstrates the importance of the river cruising to the area's economy. In 2019, 19,000 passengers and 335 crew members on 72 separate port calls visited the LC Valley which led to an estimated 3.5 million dollars spent in the immediate area by the cruise industry.

Cruise industry spending is estimated to account for 50 direct jobs at the peak of the visitor season and nearly a \$1.0 million in payroll in 2019. An additional 20 supporting jobs increase the total payroll impact at \$1,365,000.



The study identified opportunities and gaps in accommodating the riverboat industry which contributed to an action plan that builds upon current momentum and is designed to maximize the economic impact of the riverboat industry while enhancing the experience for cruise lines, passengers, and local businesses. Recommendations include adding additional docking capacity, addressing airline and hotel gaps, and engaging local businesses to elevate passenger experiences during their visit.

The final Economic Impact and Needs Assessment of the Cruise Boat and Passenger Vessel Industry in the Lewis-Clark Valley can be found at <https://portofclarkston.com>.



## COMMUNITY DEVELOPMENT NEWS IN BRIEF:

3

CDBG projects selected this year are moving into the award contract process

- City of Kamiah - Water Booster Station
- City of Juliaetta - Wastewater Treatment Plant Upgrade
- City of Nezperce – Wastewater Storage and Reuse

Staff are managing a number of open community development/infrastructure projects including:

- Kamiah City Pool,
- Kendrick Wastewater Upgrade,
- New Meadows Water Upgrade,
- Adams County Health Center Medical Vehicle (pictured), and
- Weiser Ambulance District Ambulance.

Project recently closed or in close-out include Rapid River Water, Donnelly Water, Weippe Water, and New Meadows Wastewater



Projects in Development:

Staff are in contract to assist the City of Cottonwood on a project to replace the existing park restroom with an accessible restroom and pavilion. Also we are looking into a number of wastewater and water projects, and other park projects (pools, splash pads, skate parks)

J-U-B Subcontract: CEDA was selected with a team from J-U-B Engineers to complete a master plan for the 310 acre Lewiston Community Park, near the new high school. Our role is to develop a phased funding strategy to support build-out of the park.

## DREAM IT DO IT CREATES OCCUPATIONAL VIDEO LIBRARY

CEDA continues to work with industry partners and Advantage Advertising in the development of an occupational video library. The video library is being made available to area educators, industry, and students to assist area youth (and adults) in understanding the job opportunities for some of the most in demand occupations in the locale. The videos have been developed for 8-12th grade audiences.

Ten to twelve occupational videos are being produced to give North Central Idaho a start in the video library. Currently, these videos are available.



1. Moscow Fire Department  
<https://vimeo.com/572340896>

2. Idaho Forest Group  
<https://vimeo.com/572701472>

3. Presnell Gage Accounting:  
<https://vimeo.com/572224525>

4. Hillco Technologies  
<https://vimeo.com/555902285>

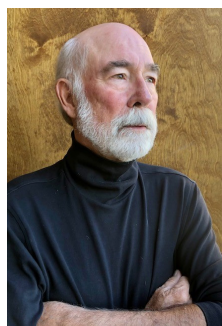
5. J-U-B Engineers  
<https://vimeo.com/573211516>

6. Clearwater River Casino & Lodge  
<https://vimeo.com/575089333>

The Best Western University Inn video is in process with several more videos pending development. The project is funded by CEDA, the Economic Development Administration, and with the majority of funds coming from the Idaho State Workforce Development Council Public Outreach Grant Program.

CEDA is grateful for the cooperation of all industry partners as well as Lewis-Clark State College. LC State has also created a companion video that will later be made available that helps youth to focus on educational preparation along their pathway to a career of their choosing.

## TIM MCDONALD JOINS IDA-LEW ECONOMIC DEVELOPMENT COUNCIL



Tim McDonald joined the region's economic development team in mid-June as the new Director of the Idaho County – Lewis County (Ida-Lew) Economic Development Council. Working under the direction of the council, Tim will develop, implement, and coordinate assistance with business expansions, business retention, business relocations, and entrepreneurial development. He will also help to lead efforts to address issues that inhibit business development such as inadequate high speed internet service, housing shortages, and the lack of childcare services.

Tim has a strong business background with degrees in Civil Engineering and Economics. He has owned and operated several small businesses throughout his career. With each success or failure he has learned a great deal and now wishes to pass some of that hard earned knowledge on to our entrepreneurial clients. He is easily reached at (208) 983-8302 or [Tim@Ida-Lew.org](mailto:Tim@Ida-Lew.org).

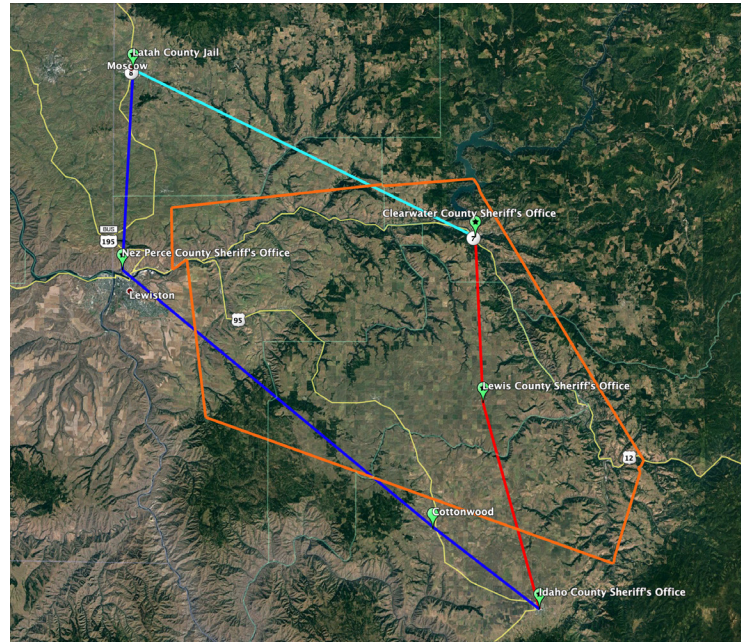
Gavin Lewis, formerly with Idaho-Lew Economic Development Council resigned his position. Prior to leaving, Gavin assisted Tim in making local business and resource provider connections. CEDA wishes Gavin the very best as he moves into a new chapter of his life.

## PLANS CONTINUE FOR BROADBAND FIBER FOR NORTH CENTRAL IDAHO

Since June 2020, CEDA has worked with the District 2 Interoperability Governance Board (DIGB2) and the Port of Lewiston to address broadband middle mile backbone needs for North Central Idaho. Although the driver for DIGB2 is public safety communication needs, the broadband infrastructure is need for industry, education, and healthcare as well.

The Port of Lewiston is providing the mechanism to address these needs through their interest and actions as the eventual owner and manager of a middle mile broadband, open access network that serves our region. The Port of Lewiston already owns and manages dark fiber in Nez Perce County. They provide opportunities for Internet Service Providers (ISPs) to lease their infrastructure so that the ISPs can serve customers. This private-public partnership allows equal access to small, medium, and large ISPs that want to use the system.

The accompanying map shows the links that are being created within the Idaho counties of Latah, Nez Perce, Lewis, Clearwater, and Idaho. Not shown is plans to connect Idaho County from Grangeville to New Meadows in Adams County. If the following projects are accomplished, our region will have a redundant, reliable, high speed internet, fiber system and a north to south route connecting to southern Idaho. Here is a project update:



### 1. Orofino-Nezperce-Grangeville Broadband Construction Project:

The Port of Lewiston is planning to submit a broadband grant application to the State of Idaho to complete this fiber segment. The segment links three counties. Currently, over \$2.8 million dollars have been committed by local government to provide match to a \$6.5 million project.

### 2. Moscow-Lewiston-Grangeville Broadband Project:

The Port of Lewiston is in the last stages of the environmental review. With good fortune, the project may be awarded EDA grant funds within the next several weeks. Procurement and engineering design will follow. This is a \$5.6 million project.

**3. Grangeville to New Meadows Feasibility Study:** Idaho County has been awarded \$120,000 of EDA Technical Assistance funds and \$24,000 in Idaho GEM Grant funds. It is matched by the North Central Idaho counties in the amount of \$6,000. The project will provide critical information towards the feasibility of engineering, construction, and management of the fiber segment. The engineering/consultant request for proposals is in process.

### 4. Grangeville to New Meadows Broadband Construction Project:

The DIGB2 planning team is discussion the possibility of applying for State of Idaho broadband funds that the team believes will be made available after the 2022 legislative season should the planning study determine project feasibility.

The DIGB2 Broadband Planning Team met with Senator Carl Crabtree who currently serves on the Idaho Broadband Committee. On August 11, the Team met with Senator David Nelson who also serves on the committee. In addition, discussions are underway with the Imagine Idaho Foundation for planning resources.

These middle mile projects are primarily intended to create fiber connection between the five county seats in north-central Idaho. The goal is to create a fiber system that can handle large volumes of data and that has redundancy so that if one fiber line is cut data can be rerouted without interruption. This system is important for public safety, healthcare, education, and industry. Each must have reliable, affordable high speed internet accessibility. This system also supports microwave or wireless internet services.

## **IDAHO COUNTY AWARDED BROADBAND FEASIBILITY STUDY GRANTS**

Idaho County, on behalf of the District II Interoperability Group (DIGB2), has been awarded two grants to procure services to conduct a broadband feasibility study for a dark fiber conduit between the communities of Grangeville and New Meadows. This area was identified in the 2019 findings of Governor Little's Idaho Broadband Task Force as the largest area in the state unserved by broadband. The study will provide critical information needed for regional and state stakeholders to assess project challenges to include best route and design, determine needed capital investments, identify revenue stream potentials, define operational costs, and return on investment, and ascertain ownership options to include public-private partnerships.

The \$150,000 project is funded through the Economic Development Administration (EDA) Technical Assistance Grant program (\$120,000); Idaho Gem Grant program (\$26,000), and local match (\$6,000) provided by the five North Central Idaho counties. A request for qualifications has been published; interested parties may contact Dave Taylor, Project Manager, at [davetaylor@co.nezperce.id.us](mailto:davetaylor@co.nezperce.id.us) or 208-746-4911. The project will be concluded on or before June 1, 2023.

### **REQUEST FOR QUALIFICATION FOR IDAHO COUNTY NORTH/SOUTH FIBER LINK FEASIBILITY STUDY**

The Board of Idaho County Commissioners, in coordination with the District 2 Interoperability Group, are requesting qualifications from firms interested in delivering a Broadband Feasibility Study defining the feasibility of constructing a fiber link between the communities of Grangeville, ID in Idaho County, ID and New Meadows, ID in Adams County, ID.

For complete details regarding the desired contractor qualifications, project scope of work, timeline, and application submittal process, please go to <https://idahocounty.org/employment-opportunities-job-openings/>. A copy of the RFQ can be obtained from the Project Manager at [DaveTaylor@co.nezperce.id.us](mailto:DaveTaylor@co.nezperce.id.us) or by calling (208) 791-6703.


Submittal deadline: 5:00PM PDT, Friday, October 1, 2021

## **LEWIS AND IDAHO COUNTY AWARDED IDAHO BROADBAND FUNDS**


The Idaho Broadband Fund consists of funds appropriated by the legislature for financial assistance of broadband infrastructure in Idaho to promote equal access in economic development, public safety, telehealth and education. In July the Idaho Broadband Advisory Board accepted applications for \$10 million of CARES Act Funding remaining from the 2020 allocation. CEDA assisted these applicants with fixed wireless broadband proposals that would deliver 100 Mbps/20 Mbps speeds:

- City of Culdesac - Build out five sites to provide coverage for 340 homes in the city and the surrounding area (\$300,000)
- Lewis County - Build out five sites to provide coverage for 220 homes in the communities of Central Ridge, Craig Junction, rural areas south and east of Winchester. This project complements a successful project in the county completed last year that serves around 1,000 homes. (\$200,000)
- Idaho County - Build out 10 sites to provide coverage for 600 homes in the communities of Pollock, Whitewater Wilderness Subdivision, Westlake, Caribel, Glenwood, and rural areas east and south of Kooskia city and the surrounding area. This project complements a successful project in the county completed last year that serves around 2,000 homes. (\$500,000)

The Advisory Board received over 50 applications totaling \$39 million. In early August the Board announced that they were funding thirteen of these projects, including Lewis and Idaho Counties. The thirteen awarded projects will serve more than 20 rural communities and more than 2,391 unserved or underserved Idaho households. The Board will also be overseeing \$35 million in state-appropriated funds, and potentially millions of additional funds provided through the American Rescue Plan. We are optimistic there will be growing sources of resources to address broadband needs in our region and across the state.



**Want to help us collect data on broadband speeds in our area?**  
**Take a speed test!**  
**Ookla: SpeedTest.Net**  
**MLab: [speed.measurementlab.net](https://speed.measurementlab.net)**





# A Guide to The U.S. EDA'S American Rescue Plan Act Funding Opportunities



## **The EDA has \$3 billion from the American Rescue Plan to help communities recover and build more resilient economies.**

The EDA is accepting grant applications for a series of six challenges (see page 2) from economic development districts, state and local governments, higher education institutions, nonprofits, unions, and tribes.

### **INVESTMENT PRIORITIES**

In addition to the criteria listed for each funding announcement, competitive grant applications must address Recovery & Resilience and are encouraged to address other investment priorities:

1. Equity
2. Workforce Development
3. Manufacturing
4. Tech-Based Economic Development
5. Environmentally Sustainable Development
6. Exports & FDI

More information about EDA's Investment priorities can be found [here](#).

### **CEDA CAN ASSIST...**

- Facilitate regional partnerships & application alignment
- Regional economy description
- Proposal alignment with regional CEDS
- Letters of support
- Grant writing & administration services
- Potentially serve as a sub-applicant

### **ADDITIONAL RESOURCES**

Read EDA's [fact sheet](#)  
Read EDA's [press release](#)  
Sign up for EDA's [newsletters](#)  
[CEDA's CEDS](#)

---

#### **Economic Development Administration (EDA)**

Carleen Herring  
Idaho-Nevada Economic Development Representative  
[cherring@EDA.gov](mailto:cherring@EDA.gov)  
206-798-7814

#### **Clearwater Economic Development Assoc.**

Regional Economic Development District  
Deb Smith, Regional Planner  
[dsmith@clearwater-eda.org](mailto:dsmith@clearwater-eda.org)  
208-746-0015x103

# 6 FUNDING OPPORTUNITIES

APPLICATIONS MUST ALIGN WITH THE 2020-2025 [CEDA CEDS](#)



## BUILD BACK BETTER REGIONAL CHALLENGE

Funding available: \$1 billion

Phase 1 deadline: October 19, 2021

Summary: These grants will go to 20-30 regions to grow new regional industry clusters or scale existing sectors through planning, infrastructure, innovation and entrepreneurship, workforce development, access to capital, and more.



## GOOD JOBS CHALLENGE

Funding available: \$500 million

Application deadline: January 26, 2022

Summary: These grants will support the creation and implementation of industry-led training programs, designed to provide skills for and connect unemployed or underemployed workers to existing and emerging job opportunities.



## ECONOMIC ADJUSTMENT ASSISTANCE CHALLENGE

Funding available: \$500 million

Suggested application submission date: March 15, 2022 (rolling review)

Summary: This flexible program aims to fund local construction and non-construction projects. Eligible projects include technical, planning, workforce development, entrepreneurship and public works and infrastructure projects.



## INDIGENOUS COMMUNITIES CHALLENGE

Funding available: \$100 million

Suggested application submission date: March 15, 2022 (rolling review)

Summary: This program for tribal governments and indigenous communities will fund economic development projects, including technical, planning, workforce development, entrepreneurship, and public works and infrastructure projects.



## TRAVEL, TOURISM & OUTDOOR RECREATION GRANTS

State Tourism Grants: \$510 million in non-competitive awards to help states quickly invest in marketing, infrastructure, workforce and other projects.

Application due 60 days after receiving invitation.

Competitive Grants: \$240 million for infrastructure, workforce and more in the hardest-hit communities. Suggested application submission date: March 15, 2022.



## STATEWIDE PLANNING, RESEARCH & NETWORKS GRANTS

State Planning Grants: \$59 million to promote equity and develop resilient local economies. Application due 45 days after receiving invitation. Research & Networks

Grants: \$31 million to research EDA program effectiveness and to support EDA initiatives.

Suggested application submission date: October 31, 2021.

*Please Note: The information included in this document is for summary purposes only. Please refer to the full NOFO, EDA's website, or contact PAC for more detailed information.*

## CLEARWATER BASIN YCC GETS TO WORK!

The Clearwater Basin Youth Conservation Corps is wrapping up their eight week season and has a lot of accomplishments to celebrate. In 2021 the program consists of six crews stationed in Grangeville, Kooskia x2, Pierce, Orofino, and Potlatch. Each crew is comprised of a 5-person team of youth ages 16-18 and 1 adult crew leader. Two Wilderness Trail Crew positions in the Selway-Bitterroot Wilderness were also hired for, providing an opportunity for 18 year olds to gain experience on a Forest Service Trail Crew. In total, for the 2021 season, CEDA has hired 28 local youth for the CBYCC day crews, 7 adult crew leaders, and 2 Wilderness Trail Crew members.

Each crew works on a variety of projects including those that focus on silviculture, wildlife and fisheries, facilities maintenance, recreation, fuels reduction, trail development, weed management, stream restoration, and protection of heritage and other high conservation value sites. This season crews have also been working hard to support fire efforts across the region. The intent is that work projects provide a valuable experience for the crew, but also accomplish a productive task for the sponsoring partner.

The Clearwater Basin Youth Conservation Corps is funded through partner contributions and donations. The major program partner for the Kooskia (x2), Grangeville, Potlatch, and Pierce crews is the USDA Forest Service: Nez Perce-Clearwater National Forests. The Orofino crew is funded on a yearly basis through a competitive grant program offered by the USACE Walla Walla for education and training at Dworshak Reservoir. The CBYCC offers other local private, public, and nonprofit agencies the opportunity to hire a crew on a daily or weekly basis to complete projects. 2021 non-USFS/USACE Project Partners include: Nez Perce National Historic Park; Idaho Fish and Game; Idaho Forest Group; Idaho Firewise; Latah County Soil and Water Conservation District; and Empire Lumber

Many entities also donate to and support the CBYCC to ensure the success of the program. Partners for the 2021 season include: Clearwater Potlatch Timber Protective Agency; Idaho Forest Group; Freedom Northwest Credit Union; The Lewis-Clark Valley Healthcare Foundation.

Facebook: Clearwater Basin Youth Conservation Corps Instagram: @IdahoCBYCC

For more information or question on the CBYCC, contact Angie Edwards-Kuskie at [aedwards@clearwater-eda.org](mailto:aedwards@clearwater-eda.org).



CBYCC Orofino works on a fire break near the USACE Work Center at Grandd.



CBYCC Potlatch works to clean and roll fire hose at the Palouse Ranger District.



CBYCC Wilderness Trail Crew Member Wyatt Griffiths (yellow hat) works to clear a log via crosscut saw.

M  
E  
M  
B  
E  
R  
S  
H  
I  
P

<b>Public Sector:</b> Clearwater County Idaho County Lewis County Latah County Nez Perce County Nez Perce Tribe  Cottonwood Craigmont Culdesac Deary Elk River Genesee Grangeville Juliaetta Kamiah Kendrick Kooskia Lewiston Moscow Nezperce	Peck Orofino Pierce Potlatch Riggins Stites Troy Weippe White Bird Winchester  Juliaetta-Kendrick Recreation District White Bird Area Recreation District Port of Lewiston  <b>Education:</b> Lewis-Clark State College University of Idaho	<b>Private Sector:</b> Banner Bank Castellaw Kom Architects Clever Fox Architecture Columbia Bank First Step Internet Great West Engineering, Inc. Impact STEM Ed, LLC J-U-B Engineers, Inc. Keller Associates, Inc. Keltic Engineering, Inc. Mountain Waterworks, Inc. Northwest Management Potlatch #1 Financial Credit Union RGU Architecture and Planning TenderCare Children's Center Umpqua Bank US Bank TD&H Engineering Washington Trust Bank Wells Fargo Zions Bank	<b>Utilities:</b> Avista Clearwater Power Company  <b>Non-Profit/Agency Partners:</b> Clearwater County Economic Development Council Ida-Lew Economic Development Council Idaho Dept. of Environmental Quality Idaho Dept. of Labor Idaho Rural Water Association Lewis-Clark Valley Chamber North Central Idaho Travel Association Northwest Intermountain Manufacturers Association Valley Vision, Inc.
--	---	---	---

**CONTACT CEDA: - 1626 6th Ave N Lewiston, ID 83501 - 208.746.0015**

**Christine Frei, Executive Director:**  
[cfrei@clearwater-eda.org](mailto:cfrei@clearwater-eda.org)

**John Lane, Business Finance Director:**  
[jlane@clearwater-eda.org](mailto:jlane@clearwater-eda.org)

**Deb Smith, Regional Economic Planner:**  
[dsmith@clearwater-eda.org](mailto:dsmith@clearwater-eda.org)

**Angela Edwards-Kuskie, Community Development Specialist:**  
[aedwards@clearwater-eda.org](mailto:aedwards@clearwater-eda.org)

**Dodd Snodgrass, Development Manager:**  
[dsnodgrass@clearwater-eda.org](mailto:dsnodgrass@clearwater-eda.org)

**Amber Dahmen, Officer Administrator/Business and Loan Assistant:**  
[adahmen@clearwater-eda.org](mailto:adahmen@clearwater-eda.org)