



CEDA ANNUAL REVIEW

May 1, 2022 – April 30, 2023

1626 6th Avenue N.
Lewiston, ID 83501
(208)746-0015
www.clearwater-eda.org



CEDA Vision

As the collective voice for north central Idaho, CEDA provides leadership and guidance in developing communities, diversifying the economy, and creating prosperity.

CEDA Mission

To assist business and communities by acting as a conduit to needed resources.

From the Executive Director



It's been a busy twelve months. Here at CEDA we wear a lot of hats serving north central Idaho. Functionally, we deliver planning and development services to create economic vitality for the region in these areas: **business, community, economic, and workforce**:

- Our business development and finance program provides technical assistance and loans not only in north central Idaho, but within southeast Washington. Lending activity this past year was relatively strong. Our loan capital continues to grow and we could reach \$8.3 million in revolving loan funds this year.
- Also in business development, we have some exciting opportunities to invest in new projects as we sold some real estate assets this past year.
- In community development we are serving many cities to address infrastructure improvement needs through grant writing and project administration. Broadband is a specific area that is seeing big success and future opportunities through federal funding programs.
- Our economic development planning work culminated this spring with the completion of a statewide economic strategy that is a collaboration with our partner Economic Development Districts of Idaho (EDDI) and the state, and now we are moving into our own regional Comprehensive Economic Development Strategy update effort.
- We are uniquely involved in workforce development. This ranges from our annual Dream it Do it Here Youth Conference, which had record attendance at Lewis-Clark State College in 2022, the Clearwater Basin Youth Conservation Corps, which is a summer employment program, and our direct involvement with businesses and educators to improve the talent pipeline. This connection was apparent for me when I attended the first NC3 National Letter of Intent Signing Day at LC State on April 20, where the college welcomed incoming Career and Technical Education students - some local, some from outside the area. It is exciting to know that programs we provide, which impact high school students and employers, may influence decisions to study and work locally.

We appreciate our members. This year we have a record 68 dues-paying members. Dues are used to leverage opportunities and direct support to the region :

- Match for the US EDA Planning Grant
- Match for business technical assistance, education programs, and other grant opportunities
- Community Development Program, Membership Services Budget

I thank our CEDA leadership, Board Chair Cari Miller, Vice-Chair Kathie LaFortune, our Board of Directors, and all the other volunteers that participate on our program councils and committees.

Again, we are here for you. The staff at CEDA is available to help you navigate a project idea or meet with a business that is seeking assistance.

Dodd Snodgrass
Executive Director

STRATEGIC PLANNING

Updating CEDA's north central Idaho Strategic Plan

CEDA is in the process of updating the District's Comprehensive Economic Development Strategy (CEDS) called *2020-2025 Pathway to Accelerate north central Idaho Strategic Plan*. Planning meetings will be held in each of the five counties beginning this summer. This planning document is designed to bring together public and private sectors in the creation of an economic roadmap to diversify and strengthen the regional economy of north central Idaho.

The CEDS contains a list of community projects, both in implementation and on a 'wish list'. In our efforts to ensure the document contains up-to-date information, CEDA is putting out a **CALL FOR PROJECTS**. It is now more important than ever that community projects are listed in comprehensive strategic plans such as the CEDS; funders are looking to support projects that are well planned and collaborative. Many grants require projects to be included in local, regional, or state plans for funding eligibility. It is important that each county or community include their project priorities in the CEDS, this will assist them in their efforts to seek public grant funds to support their project(s).

We invite municipalities, counties, and CEDA partners to complete the **CALL FOR PROJECTS** survey via Survey Monkey at www.surveymonkey.com/r/XZM8XJ6. We will be reaching out to you!

Statewide Economic Development Strategy Wrap-Up

CEDA collaborated with statewide partners to complete the *Idaho Strong 2023–2028 Statewide Economic Development Strategy*. The statewide economic plan highlights common goals and actions as well as identifies opportunities to expand partnerships, support statewide economic development initiatives, and increase Idaho's economy throughout the state.

The multi-year project approaches statewide economic development from a bottom-up methodology by using Idaho's five economic development districts strategic plans as a foundation. An analysis of over sixty Idaho state agency strategic plans, directly or indirectly related to economic development, was completed to ensure alignment of goals and strategies relative to Idaho's economic vitality. Strategic planning sessions were held with members of Idaho Rural Partnership, Idaho Department of Commerce, Idaho Department of Labor, and members of the five Idaho economic development districts.

The project was funded by the US Economic Development Administration (EDA) and EDDI (Economic Development Districts of Idaho). *The Idaho Strong 2023 – 2028 Statewide Economic Development Strategy* can be found at <https://clearwater-eda.org/reports>.

CEDA played an important role leading this effort. We are hopeful it will lead to increased alignment with our partner regions and the state of Idaho.

Deb Smith, CEDA Regional Economic Development Planner, is responsible for economic planning and strategic planning services.

WORKFORCE DEVELOPMENT

Talent Pipeline Management Program

In August 2022, CEDA was one of seven host organizations in Idaho securing a sub-award from the Idaho Workforce Development Council to organize and manage a “Talent Pipeline Management” program. TPM’s foundation is built on using industry representative cohorts to identify and evaluate employment needs, connect the industry cohort to the appropriate supplier (education/training provider), then develop and initiate the appropriate training programs to meet employer/industry needs. CEDA was granted the agreement because of our historic effort to expand workforce development in the region, our coordination of the DIDI Youth Conference, and our Inland Northwest Workforce Council’s (INWC) re-branding to focus on industry-education connections.

Our initial focus includes health care and manufacturing, which represent 27% of the region’s employment.

- Manufacturing is the 4th ranked industry with the hardest time filling postings (55 days).
- Health Care and Social Assistance is the Top Industry in total job postings with 296 available jobs.

Healthcare Cohort: The INWC established an Inland Northwest Healthcare TPM Cohort in Fall 2022 involving most of the region’s hospitals and Catalyst Medical Center. Convening over several month’s, the initial effort led to the creation of the following:

- **CEO Working Group** is addressing recruitment barriers, housing, and childcare. During this reporting period the CEO’s have been working on collaborative recruitment marketing and co-hiring to share employees in hard to fill positions. Of note: both major hospitals in the immediate area are recruiting doctors and specialists internationally.
- **Credentiaing Working Group** is addressing barriers/gaps in education and training, developing, and promoting career scaffolding, and youth/adult outreach. The following activities have happened during this reporting period:
 - Walla Walla Community College, based upon information identified during the TPM process, is now offering a 12-week phlebotomy class during the evening to meet the needs of students that may be working full time or unable to attend daytime classes due to family commitments.
 - Clarkston High School began preparing for a CNA cohort in fall 2023.
 - Lewis-Clark State College has been approved to make regulatory changes that will modify clinical placements.
 - North central Idaho providers are interested in developing externships.



Discussion amongst the cohort members has often centered on ‘culture’ and how culture needs to modify (some said step into the 21st century) to attract and keep younger workers. Many of the Healthcare Cohort members have been trying to identify and implement strategies to address and refine workplace culture.

Manufacturing Cohort: CEDA reconvened a group of up to 12 manufacturers since December. Participants identified skills gaps, highest in-demand positions, workforce culture, and supplier issues. They were very open about discussing impediments like wage levels, addressing workplace culture, and advocacy with talent providers. Gathering busy manufacturers for in-person meetings took effort. By conducting on-site visits, we increased the interest and understanding for our project initiative. At the March 30 Cohort meeting, participants identified eight outcomes they would like generated from the cohort: Robust local pipelines; Trusting relationships; Flexible partners for quick wins; Strategic staffing; Win for employers; Win for schools; Win for students/job seeker; Win for local economy. Discussions continued regarding skills needed, retirement timelines, recruitment efforts, and current training provided by suppliers. We are currently planning the next session to include education partners.



Local Truck Driving School Developed

CEDA has been instrumental in helping establish a commercial truck driving training program with LC State Workforce Training and the Commercial Driver School. The first Truck Driving Cohort began in early March, the second cohort scheduled for May is full, and a third cohort is scheduled for early summer. The Nez Perce Tribe has been in contact with Workforce Training at Lewis-Clark State College and Commercial Driver School regarding CDL and dump truck driving courses for tribal members. This has been a benefit not only for short and long-haul trucking, but it has also benefited food service providers such as Pepsi and Coca Cola delivery drivers.



New Funding Opportunities

With new resources appropriated by the Idaho Legislature, including the \$8,000 per student Idaho Launch career-technical education program, and an expanding focus on CTE in the high schools, we are well-positioned to expand and leverage workforce development resources for north central Idaho.

Deb Smith and Dodd Snodgrass are responsible for coordinating the workforce council and TPM activities.



Clearwater Basin Youth Conservation Corps Program

The Clearwater Basin Youth Conservation Corps (CBYCC) is a partnership started in 2013 through the efforts of Clearwater Resource Conservation and Development District, Clearwater Basin Collaborative, USDA Forest Service, Idaho Department of Labor, U.S. Army Corps of Engineers, USDI Bureau of Land Management and Park Service, Idaho Firewise, and other local counties, communities, and organizations. CEDA assumed management of CBYCC in 2019.

The mission of the CBYCC is to expose youth to natural resource career opportunities and to facilitate the development of practical problem-solving skills while participants work alongside program and technical specialists on projects that restore aquatic and terrestrial habitats and promote healthy rural communities.

In 2022, the CBYCC employed 25 north central Idaho youth from area high schools and 6 adult crew leaders for 5 crews working out of Grangeville, Potlatch, Kooskia, Orofino and Pierce plus two Wilderness Trail YCC crew. Crews worked with 9 different public, private, and nonprofit organizations to benefit resources across north central Idaho.



2022 partners included the Nez Perce-Clearwater National Forests, the Army Corp of Engineers, Latah County Soil & Water, Idaho Firewise, the National Park Service, Clearwater-Potlatch Timber Protective Association, Latah County, Idaho Forest Group, the Clearwater RC&D, Clearwater Basin Collaborative, Idaho Fish and Game, and others.

The CBYCC is more than a summer job. It's workforce development for our youth and for north central Idaho. In addition to the summer employment, we aim to provide:

- Career exposure and pathways to careers in north central Idaho
- Resume & Professional Development
- Interview and problem-solving skill development
- First Aid & CPR training
- Connecting local youth to the Clearwater Basin landscape



Hiring is underway for the 2023 season!



Angie Edwards-Kuskie, former Community Programs Manager, directed the 2022 CBYCC program.



Dream It. Do It...Here 2022 Youth Conference

The 6th Annual ***Dream It Do It...Here Youth Conference*** was held May 17, 2022 at the Lewis-Clark State College Main Campus and the Schweitzer Career Technical Education Center and **broke a record with 489 students** from twenty school districts throughout the region exploring a multitude of careers in our region. The purpose of the event is to attract high school students to local careers and educational pathways to attain the jobs we have in north central Idaho and southeast Washington.

The event also generated more financial support from key sponsors including the Nez Perce Tribe, University of Idaho, Lewis-Clark State College, Idaho Forest Group, Northwest Intermountain Manufacturers Assoc, Mike's Mechanical, WWCC, Hillco Technologies, LC State Workforce Training, and Renaissance Marine Group.

Planning for the 7th Annual conference, which will be held May 16, 2023 at the University of Idaho, began in October. There is plenty of demand and excitement for this year's event – the participation limit of 500 students was reached eight days after registration opened. Eighteen different high schools from north central Idaho and southeast Washington will be represented at this year's conference.

Industry representatives are key to the success of the event. Dynamic industry representatives share information on their company or organization, what their job requires, their career path, what they like about their work, and what education is required for their job. Recruiters from LC State, University of Idaho, and Walla Walla Community College University will host other sessions to link students to career pathways for the local job market.

This event would not have been possible without the hard work of the Planning Committee and the numerous volunteers that assist the day of the conference. CEDA would like to recognize the Planning Committee members, many of which have been serving on the committee since the event began in 2016.

- Dodd Snodgrass, CEDA
- Erin Cassetto, Lewis-Clark State College
- Jason Nierman, University of Idaho
- Kay Seven, Nez Perce Tribe – Education Department
- Krista Baker, CEDA
- Kristy Mayer, University of Idaho
- Liz Weldy, Lewis-Clark State College
- Mackenzie Hollingsworth, Lewis-Clark State College
- Chris Cook, University of Idaho



Deb Smith is responsible for coordinating the Dream It Do It Planning Committee.

BUSINESS & INDUSTRY DEVELOPMENT

Business Finance and Technical Assistance

Capital Expansion

CEDA has been tentatively awarded \$3.3 million to further expand its small business lending capacity. At the time of this publication, finalization of the award is subject to acceptance by the CEDA Board of Directors and finalization and signing of contracts with the State of Idaho. This award is part of a statewide effort by the Economic Development Districts of Idaho (Panhandle Area Council, Region IV Development, Southeast Idaho Council of Governments, and East Central Idaho Planning) to secure additional loan capital from American Rescue Plan Act (ARPA) Funds. The 2022 Legislature authorized a new program that deploys \$26 million in loan capital across the state via expansion of revolving loan fund capital at each of the districts. Statewide, the program is known as the Idaho Small Business Revolving Loan Fund or “Idaho RLF” for short. Projects financed with the Idaho RLF must be in Idaho. CEDA can finance projects located in southeast Washington State with USDA programs.

CEDA’s capital has expanded in recent years from \$3.5 million at the end of 2019 to the current base of \$5 million, which is a combination of three USDA Rural Development programs, two EDA awards, and one pool funded with local monies. The Idaho RLF capital would bring the total to \$8.3 million once fully implemented. CEDA strives to have 80% to 85% of its capital in the form of loans with 15% to 20% available for new projects. The portfolio is growing and reaching that point following the capital expansion over recent years. This latest expansion will help ensure capital availability for another four to five years based on historical growth rates of the portfolio.

Activity Highlights

Funds disbursed for new loans during each of the last two fiscal years totaled over \$1.2 million as did disbursements over the most recent 12 months. Both are slightly higher than the five-year average of \$1.1 million per year for new loans. Repayment of principal from existing loans has averaged about \$900,000 per year over the same five-year period. The early payoff of CEDA loans is expected to slow due to the fixed interest rates on loans issued previously being relatively lower than the rates on new debts.

Nine new loans have been closed over the most recent 12-month period, which is slightly below the average of 10.5. The combined dollar amount of these loans is over \$1.3 million, making the average loan amount nearly 150% of the five-year average. Of the nine loans closed, two of the projects were in the LC Valley, four in Clearwater County, and one each in Idaho, Lewis and Asotin County.

Uses of funds included a new building to house a machine shop, a CNC machine, wireless broadband equipment, logging equipment, a building purchase, and a debt reorganization, each to

facilitate expansion of the borrower's operations. Startup projects included an excavator for a one-person excavation business, logging truck, and lastly leasehold improvements and equipment for a food truck-based food court.

No bad debt losses have occurred since FY18 and FY19 during which \$51,531 and \$5,236 were written off as uncollectible. CEDA's bad debt loss rate is 3.5% compared to an industry expectation of 3% to 6%.

CEDA also provides direct technical assistance to applicants and borrowers. An average year includes helping over 60 unique businesses each year. CEDA focuses on assistance that complements that offered by partners such as the Idaho Small Business Development Center and most often is related to accessing funding. Funding for this activity is provided by USDA Rural Development through the Rural Microentrepreneur Assistance Program (RMAP).

CEDA Properties for Economic Development: *New Opportunities for Investment*

CEDA's Asset Management program is beginning a transition after 18 years. Following the sale of the Alturas Technology Park Building in Moscow and the Craig Mountain Business Park in Craigmont in 2022, CEDA is looking to re-invest funds in north central Idaho.

A standing Asset Management Committee is in place to help identify and screen potential projects for the Board of Directors to consider. The parameters are broad. The project or program should address an economic development challenge identified in the regional and local economic development plans and be "an investment" that can be recovered for reinvestment as well as provide a return that is adequate to fund implementation/operations of the program or project.

Please bring your ideas to CEDA staff, the CEDA Asset Management Committee, or to the CEDA Board of Directors.



Sale of the Alturas Building to Northwest River Supplies (September 2022)

John Lane, Business Development & Finance Director and Amber Dahmen, Office Administrator/Small Business Loan Assistant, support business finance and asset management programs.

Other Business Development Activities



- Northwest Intermountain Manufacturers Association

CEDA, in partnership with NIMA, with funding support from USDA Rural Development, hosted a workshop on automation and robotics on September 29 at the Clearwater Casino Events Center. Titled “Manufacturing Technology – Work Smarter, Not Harder” the event featured Dr. John Shovic of the U of I Industrial Robotics Program, Regional Economist Lisa Grigg, technology vendors, and area manufacturer panelists that have adopted technology to improve productivity, workforce retention and added value with higher skill/higher pay jobs. Over 50 people participated including manufacturers, students, and educators.

CEDA and NIMA are working together to deliver a workshop for May 3rd to learn about the federal procurement opportunity process accessible to manufacturers and other small businesses.



- EDA Public Works Grant

Early this year, CEDA assisted the Port of Lewiston to develop an Economic Development Administration (EDA) Public Works grant application designed to address the growing river cruise industry. If awarded, the application would provide funding for upland improvements to support the cruise line industries emergence into Idaho. A dock and the upland improvements are several priority projects noted in the Port of Lewiston’s master plan that also includes plans for an RV park adjacent to the docking area. The applications were supported by the October 2020 Lewis Clark Valley Cruise Boat Industry Economic Impact Study and the March 2021 Lewis Clark Valley Cruise Boat Industry Needs Assessment, which noted the need for additional berthing space to accommodate the growing river cruise industry. The application will be submitted in mid-July.

- Ida-Lew Economic Development Council

CEDA has a management agreement with the Ida-Lew Economic Development Board to provide staff overhead support. Ida-Lew provides economic development professional services to Idaho and Lewis Counties through a grant from the Idaho Commerce Dept. Tim McDonald provides these services. Tim is a Small Business Development Center Certified Counselor and is focusing on housing, labor, manufacturing, and other needs for area communities.

COMMUNITY DEVELOPMENT

Projects in Development & Implementation

Important projects that are now being implemented with CEDA involvement include:

1. Donnelly Water Upgrade: Close-out, near the end of the project.
2. Weippe Wastewater Upgrade: Close-out, near the end of the project.
3. Rapid River Infrastructure Upgrade: Close-out, near the end of the project.
4. Kendrick Wastewater: CEDA is working with the City and Keller Associates to develop a new wastewater treatment plan and move the plan to development.
5. Juliaetta Wastewater: the City has made significant progress in the design phases of their wastewater treatment upgrades.
6. Kamiah Pool: Significant progress has been made to the Kamiah Pool renovation.
7. Kamiah Booster Station: The city will be making upgrades to their booster station- work on this will start soon.
8. New Meadows Water: New Meadows has water system upgrades in progress with a scheduled completion date this fall.
9. Adams County Health Center: CEDA is doing the labor monitoring for two new Health Center buildings going up in Council to serve Adams County.
10. LC State CTE Equipment Project: The College received an extension from the US EDA to continue purchasing career technical training equipment for the Schweitzer Center and Main Campus
11. Craigmont Wastewater: Craigmont is in the beginning phase of their wastewater treatment improvements.
12. Nezperce Wastewater: Nezperce is in the beginning phase of their wastewater treatment improvements.
13. Cottonwood Parks: Cottonwood is beginning construction of a restroom-pavilion in their city park that is projected to be completed in August!
14. Orofino Parks: Orofino Champions Park is getting a new restroom that is projected to be completed before the end of summer!
15. Potlatch Scenic Six Park: Potlatch is in the process of getting a new restroom in their Scenic Six Park, next to the recently funded/installed Kelly's Splash Pad!

We are engaging now with other communities considering infrastructure improvements, with an eye on substantial new funding that is expected through the Idaho Department of Environmental Quality for water/wastewater projects.

We are also seeing interest in downtown revitalization.



Comprehensive Land Use Plans:

CEDA is continuing to work with Lewis County and the City of Riggins to complete their updates. We will be assisting the City of Craigmont and are in dialogue with the City Kamiah on an update to its plan.

Rev-up Program

This outreach program is focused on renewing economic vitality in North Idaho in partnership with the Panhandle Area Council. CEDA has supported educational opportunities on broadband and housing and is moving into Community Vitality: Building Strong Vibrant Rural Communities.

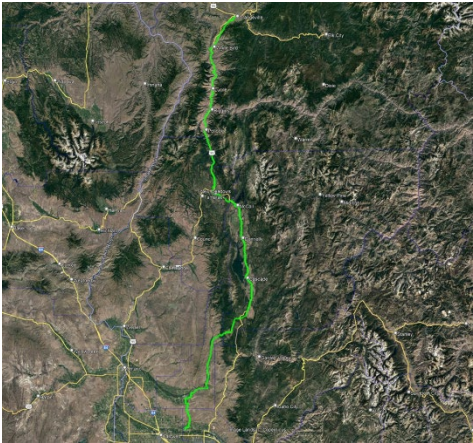
- CEDA is currently coordinating with Latah County on a fire district education workshop to be hosted in Kendrick.
- With the update to the CEDS, the Rev-Up program will be employed to survey communities and provide capacity building on topics to improve their community vitality.

Krista Baker, Community Development Specialist, assisted by Dodd Snodgrass, Executive Director, is responsible for community development projects and programs. Deb Smith provides comprehensive and strategic planning services.

Broadband

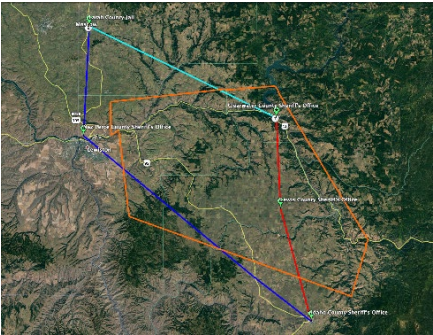
Broadband Feasibility Study Leads to Project of Statewide Significance

The long-term vision for open access middle mile broadband fiber, connecting North and South Idaho, moved closer to reality this past period. Through a grant written by CEDA to the US EDA, Idaho County procured services and completed a \$120,000 feasibility analysis for middle-mile broadband fiber between Grangeville and New Meadows. With this information, and initiative between the non-profit Idaho Regional Optical Network (IRON) and private sector Intermountain Infrastructure Group (IIG), their partnership secured a \$20 million grant award from the Idaho Broadband Advisory Board to build open access middle mile broadband over 198 miles from Grangeville to Star. This project will provide a superhighway for fast, affordable, and accessible internet services to meet broadband needs throughout the region, state, and beyond. IIG will provide services to commercial providers for commerce; IRON will continue its mission of serving education, healthcare, public safety, and governmental needs.



Port of Lewiston Fiber Buildout

CEDA is assisting the Port with administration of a \$4.5 million EDA grant, that it helped the Port to secure, to build approximately 95 miles of middle mile dark fiber from Moscow to Grangeville. The Port was successful in securing another \$6.2 million through the state of Idaho Broadband Advisory Board. This will allow full development of the project by 2026 and connect with the IRON/IIG project.



Orofino to Grangeville Middle Mile Segment

Through a funding opportunity provided by the Idaho Broadband Advisory Board, CEDA is coordinating with the five north central Idaho counties, District 2 Interoperability Governance Board (DIGB2), the City of Grangeville, the City of Nezperce, Inland Cellular, First Step Internet, and Airbridge Broadband on a grant for a redundant middle mile fiber loop connecting Orofino to Nezperce to Grangeville.

These three projects in total will significantly increase the prospects for improved community and economic vitality and serve as an “off-ramp” for direct services to residences and businesses in our region.

- CEDA partnered with the Port of Lewiston and the Imagine Idaho Foundation to conduct a Broadband Speed Test Campaign, to gauge real-time internet speeds. Over 500 residents throughout Nez Perce, Clearwater, Idaho, and Lewis counties completed the Speed Test and only 19% of them met Idaho’s minimum standard of 100Mbps download speed/20 Mbps upload speed.
- We are continuing to monitor funding opportunities through the federal ARPA Distribution and Infrastructure Investment and Jobs Act, which created competitive and programmatic grant sources.

Dodd Snodgrass and Krista Baker support the broadband initiatives.

GRANT AWARDS

CEDA remains active with grant writing to secure funds needed for regional development. Here is a table of projects that received funding with CEDA grant writing assistance, or received on behalf of CEDA projects, in the past 12 months. It includes business development, workforce development, and community development. Common grant programs CEDA works with include the Idaho Department of Commerce CDBG program, Idaho Commerce Gem Grant program, USDA Rural Business Development Grant and Rural Microentrepreneurial Assistance program, US EDA Planning, Technical Assistance and Public Works programs.

Project	Grant	Funding Agency	Amount
Economic Development Implementation	Partnership Planning Grant (yr 2/3)	EDA	\$ 75,000
Dream It Do It Conference 2023	Nez Perce Tribe Local Education Fund	NPT	\$ 5,500
Workforce Training Grant - Talent Pipeline Mgmt	Idaho State Workforce Development	State of Idaho	\$ 147,657
Potlatch Restroom	CDBG	IDC	\$ 175,000
HooDoo Sewer Project	GEM Grant	IDC	\$ 42,500
Dream It Do Conference 2023	Idaho STEM EcoSystem Sponsorship	Stem Action Center Foundation	\$ 7,000
CBYCC 2023 Season	Local agency and private sponsors	Various	\$ 36,000
CBYCC 2023 Season	NPS Nat Resource Stewardship	National Park Service	\$ 15,749
CBYCC 2023 Season	Coop Agreement	USFS	\$ 107,911
CBYCC 2023 Season	Crew funding	Resource Advisory Council	\$ 53,000
CBYCC 2023 Season+	Wildlife Crises Priority Fund	USFS	\$ 221,942
Micro-Entrepreneurial Technical Assistance	Business Development	USDA	\$ 73,794
Idaho Small Business Revolving Loan Fund	Business Development	US Treasury	\$ 3,380,000
			\$ 4,341,053

THE CEDA ORGANIZATION



The CEDA organization works with members and a cross-section of people who provide vision and planning for the work CEDA does.

Following are our volunteer board, council, and committee members. We appreciate their time and commitment to make our organization run well!

CEDA LEADERSHIP – 2022-2024

Cari Miller
CEDA Chair
Branch Manager, Zions Bank

Kathie LaFortune
CEDA Vice-Chair
Commissioner, Latah County

	BOARD MEMBER	TITLE	REPRESENTING
1	Anderson, Eric	Director	University of Idaho, Career Services
2	Beck, Don	Commissioner	Nez Perce County
3	Brown, Dave	Mayor	Potlatch, City of
4	Canaday, Dylan	Councilor	Grangeville, City of
5	Davis, Melinda	Director	Principal/Impact Stem LLC
6	Duman, Denis	Commissioner	Idaho County
7	Greene, Nikoli	Executive Officer	Nez Perce Tribal Enterprises
8	Greenfield, Steve	Branch Manager	US Bank
9	Holcomb, Keith	Mayor	Cottonwood, City of
10	Johnson, Greg	Commissioner	Lewis County
11	LaFortune, Kathie	Commissioner	Latah County
12	Larson, Bruce	President	Northwest Intermountain Manufacturers Assn.
13	Liedkie, Hannah	Councilor	Lewiston, City of
14	Miller, Cari	Branch Manager	Zions Bank
15	Nelson, Tyler	Councilor	Nezperce, City of
16	Ober, Jeff	Dean	Lewis-Clark State College, CTE Programs
17	Parker, Julia	Councilor	Moscow, City of
18	Ryan, Mike	Commissioner	Clearwater County
19	Scalise, Victoria	Consultant	Tourism Consultant/north central Idaho Travel Assn.
20	Smith, Tate	Director	Lewis-Clark State College, First Year Experience
21	Sparrow, Trevor	Director	Idaho Youth ChalleNGe Academy

MEMBERS

AirBridge Broadband	City of Stites	Keltic Engineering
Avista Corporation	City of Troy	Latah County
Banner Bank	City of Weippe	Lewis-Clark State College
Castellaw Kom Architects	City of White Bird	Lewis County
City of Bovill	City of Winchester	Lewis-Clark Valley Chamber
City of Cottonwood	Clearwater County	Mountain Waterworks
City of Craigmont	Clearwater County EDC	NCITA
City of Culdesac	Clearwater Power Company	Nez Perce County
City of Deary	Clever Fox Architecture	Nez Perce Tribe
City of Elk River	Columbia Bank	NIMA
City of Ferdinand	First Step Internet	Northwest Management
City of Genesee	Idaho Central Credit Union	Port of Lewiston
City of Grangeville	Idaho County	Potlatch #1 Fin. Credit Union
City of Juliaetta	Idaho DEQ	TD&H Engineering
City of Kamiah	Idaho Department of Labor	University of Idaho
City of Kendrick	Idaho Manufacturing Alliance	US Bank
City of Kooskia	Idaho Regional Optical Network	Valley Vision
City of Lewiston	Idaho Rural Water	Washington Trust Bank
City of Moscow	Idaho Youth Challenge Academy	White Bird RD
City of Nezperce	Ida-Lew EDC	Zions Bank
City of Orofino	Impact STEM ED, LLC	
City of Peck	Inland Cellular	
City of Pierce	J-U-B Engineers, Inc.	
City of Potlatch	Juliaetta/Kendrick RD	
City of Riggins	Keller Associates, Inc.	

WORKING COUNCILS & COMMITTEES

- **Operations & Finance** Jaynie Bentz, Steve Greenfield, Kathie LaFortune, Michell Radamaker, Cari Miller, Keith Holcomb, Eric Anderson
- **Business Development & Finance:** Paul Burris, Margaret Hair, Rob Cassetto, Denis Duman
- **Loan Review Committee:** Doug Purdy, Dan Dorman, Joe Coghill, Emily Ashby, Angela Brooks, Sam Smathers
- **Economic & Community Development:** Tate Smith, Mike Tatko, Shelly Cannon, Tim McDonald, Michelle Bly, Hy'D Andrews, Lisa Grigg, Casey Bolt, Susan Jacobson
- **Inland Northwest Workforce Council:** Adena Burnette, Erin Cassetto, John Cassleman, Jerry Chavez, Scott Corbitt, Kim Eimers, Melinda Davis, Heidi Hardin, Tony Kuphaldt, Chad Miltenberger, Kay Seven, Brian Shinn, Jennifer Weeks, Doug Cruthirds, BJ Swanson, Liz Weldy, Susan Stauffer, Adam Miller, Raymond Dixon, Jack Peasley, Kelly Kolb, Quentin Smith, Tim McDonald, Rod Van Alyne, Erika Stricker, Kellye Sharp, Peggy Jenkins
- **Northwest Intermountain Manufacturers Association Board:** Bruce Larson, Doug Miller, Lenny Hill, Glenn Anderson, Byron Cannon
- **Asset Management:** Greg Johnson, Denis Duman, Kathie LaFortune, Trevor Sparrow

CEDA STAFF

Dodd Snodgrass

John Lane

Deb Smith

Amber Dahmen

Krista Baker

May George

Executive Director

Business Development & Finance Director

Regional Economic Development Planner

Office Administrator/Small Business Loan Assistant

Community Development Specialist

Work Scholar

ADDITIONAL PROFESSIONAL SUPPORT

Accounting Services: Lohman Accounting, Andrea Braden, CPA

Auditor: Hayden Ross, Nate Strong, CPA

THANK YOU for Your Support!